

Product information

【Drug Facts】



<Kyowa-Gifu-Japan>

Please be sure to read this product information carefully before use. Keep this product information in a safe place so that you can read again, when you need it.

Class ② drugs **Athlete's foot ▪ Ringworm** (CREAM)

PALGRAN GX CREAM

The athlete's foot and Ringworm are skin diseases caused by the fungus Trichophyton, which infests the stratum corneum of the skin, etc., often accompanied by itching and pain. "PALGRAN GX CREAM" contains eight active ingredients. Once a day by using, it improves itching and painful (of athlete's foot and Ringworm) unpleasant symptoms.

<i>Active ingredients (in 100g)</i>	<i>Purpose</i>
Butenafine hydrochloride 1.0g.....	Anti-trichophyton agent
Lidocaine 2.0g.....	Reduce itching with local anesthesia
Crotamiton 5.0g.....	Reduce itching
Glycyrrhetic acid 0.5g.....	Reduce inflammation
dl-Camphor 1.0g.....	Give a refreshing feeling
Isopropyl methyl phenol 0.3g.....	Bactericidal action
Chlorpheniramine maleate 0.5g.....	Reduce the occurrence of itching
l-Menthol 2.0g.....	Give a refreshing feeling

Uses

Athlete's foot(Tinea pedis)、 Ringworm in the groin、
Ringworm in the body(Tinea corporis).

[Treatment points for Athlete's foot]

- Always clean the affected area. Let's use clean things such as socks and shoes,etc. .
- Apply the medicine widely, because the infestation of Trichophyton often spreads from the range where the symptom appears.
- Even if itching disappears, because it may recur, so let's continue the treatment patiently for a while.

- Let's prevent wetting of the affected area and try to keep it dry.

Warnings

[To be avoided]

(Failure to observe the following may result in the current symptoms worsening or adverse reactions occurring.)

1. Do not use to the following person:

If you have had allergic symptoms (rash, redness, itching, edema etc.) due to this medicine or the components in it.

2. Do not use for the next part:

- (1) Around eyes or eyes, mucous membranes (oral cavity, nasal cavity, vagina, etc.), scrotum, vulva etc.
- (2) Eczema.
- (3) Wetting, soring, cracking or severely affected areas of external wound.

[Consultation]

1. The following persons should consult a doctor, pharmacist, or registered distributor before using this medicine.

- (1) A person undergoing medical treatment from a doctor.
- (2) A pregnant woman or a woman suspected of being pregnant.
- (3) Infants.
- (4) A person who have ever had allergic symptoms due to any medication.
- (5) The affected area is on the face or in a wide area.
- (6) A person whose affected area is purulent.
- (7) A person who does not know clear whether "Eczema" or " Athlete's foot (Tinea pedis)、 Ringworm in the groin、 Ringworm in the body(Tinea corporis) by trichomonas". (If you have symptoms such as itching or sore in the scrotum, there may be other causes than eczema etc.)

2. The following symptoms may be adverse reactions to this medicine. If any of these symptoms occur, discontinue use immediately and consult a doctor, pharmacist, or registered distributor with the Japanese package insert.

Related area	Symptoms
--------------	----------

Skin	Rash ▪ redness, itching, blotch, swelling, irritation, heat on skin, skin scales, sores, dryness, irritability, crack
------	---

3. If symptoms do not improve after using it for about 2 weeks, stop using the medicine, bring this Japanese package insert, and consult a doctor, pharmacist or registered distributor.

Directions

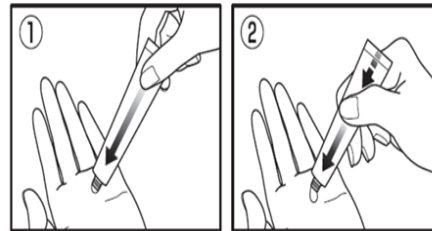
Clean the affected area and apply the appropriate amount to the affected area once a day.

[When using this product.]

- (1) Please follow the recommended dosage and directions.
- (2) Please do not use while the affected area or its surroundings are dirty.
- (3) Be careful not to get into eyes. If it gets in your eyes, please wash immediately with water or lukewarm water. And If the symptoms are severe, please be given medical treatment by an eye doctor immediately.
- (4) Do not touch your eyes or mucous membranes with this medicine.
- (5) This medicine should be given to children only under adult supervision.
- (6) Please use only for external treatment.

● Push the tube in order from the fold (tail) to the tip.

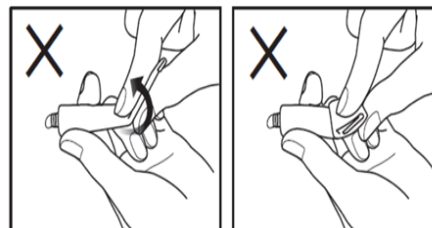
(1→2)



● The tube may be broken and the drug may pop out.

Please do not bend

Please do not fold it.



Other information

- (1) Store in a cool and dry with less humidity place free from direct sunlight by a seal tightly.
- (2) Keep all medicine out of the reach of children.
- (3) Do not transfer this medicine to a different container. (In this case, cause misuse or change quality.)
- (4) Be careful not to hold the tube too hard when making a hole in the tube, as a lot of cream may come out.
- (5) Do not use products that have expired. Please use as soon as possible from the point of quality maintenance even within the expiration date after opening.

Inactive ingredients: Isopropyl myristate, Propylene glycol,
Polysorbate 60, Carboxyvinyl polymer,
Paraben, Triethanolamine.

Questions or comments

If you have any suggestions about this product, please contact the shop you purchased or the following address.

Consumer consultation window: Kyowa Pharmaceutical Industry Co., Ltd.
Customer consultation room ☎ 058-246-8771

Reception time 9:00~12:00・13:00~17:00 (Excluding weekends and holidays)

[Request of limited correspondence] <Kyowa-Gifu-Japan>

- (1) In case of telephone consultation, please only in Japanese for a while.
- (2) The latest Japanese package insert is available on the website of Kyowa Pharmaceutical Co., Ltd. (www.kyowa-ci.co.jp).

Disclaimer statement

- (1) We use a format similar to the FDA OTC Drug Regulations, but this is not an OTC Drug approved under the FDA. Please note that it is licensed for domestic use in accordance with the Pharmaceutical Affairs Law of Japan.
- (2) This English translation was created by a manufacturer and distributor, but Japanese is a correct sentence and it should be as a reference material. In the case of any discrepancy between the two versions, the original Japanese version prevails.
- (3) The provider of this translation shall not be responsible for any damage that may be attributed to the use of the translation.
- (4) Do not use for commercial purpose reproduction, publication etc. of this English translation.
- (5) Although the English translation is prepared on the basis of the Japanese version of the attached document on the Revised date, the attached document is revised from time to time, so the English translation may not be the latest.